


Position	Qty.	Description
	1	<p data-bbox="320 338 526 367">Unilift KP 150 A 1</p> <div data-bbox="435 409 592 752" style="text-align: center;">  </div> <p data-bbox="711 770 1193 797" style="text-align: center;">Note! Product picture may differ from actual product</p> <p data-bbox="320 801 632 862">Product No.: 011H1800 Submersible drainage pump</p> <p data-bbox="320 891 847 1037">Vertical single-stage stainless steel submersible pump with vertical discharge port and integrated submersible 1-phase canned motor in insulation class F with thermal overload protection.</p> <p data-bbox="320 1070 836 1187">The pump is fitted with suction strainer and a carrying handle and is supplied with a 10 m mains cable and float switch for automatic start and stop.</p> <p data-bbox="320 1220 847 1305">The impeller is a semi-open impeller for 10 mm free passage suitable for pumping groundwater, surface water, rain water and similar liquids.</p> <p data-bbox="320 1339 839 1395">The pump has a double shaft seal consisting of two lip seals with grease in-between.</p> <p data-bbox="320 1429 884 1545">The pump has an outer casing ensuring continuous cooling of the motor by the pumped liquid. The rotor shaft operates in two maintenance-free carbon bearings cooled by the pumped liquid.</p> <p data-bbox="320 1579 836 1606">The motor is filled with a non-toxic motor liquid.</p> <p data-bbox="320 1639 916 1756">Liquid: Pumped liquid: Any Newtonian liquid Liquid temperature range: 0 .. 50 °C Density: 998.2 kg/m³</p> <p data-bbox="320 1789 759 1845">Technical: Maximum particle size: 10 mm</p> <p data-bbox="320 1879 884 2078">Materials: Pump housing: Stainless steel DIN W.-Nr. 1.4301 AISI 304 Impeller: Stainless steel DIN W.-Nr. 1.4031 AISI 304</p>



Company name:

Created by:

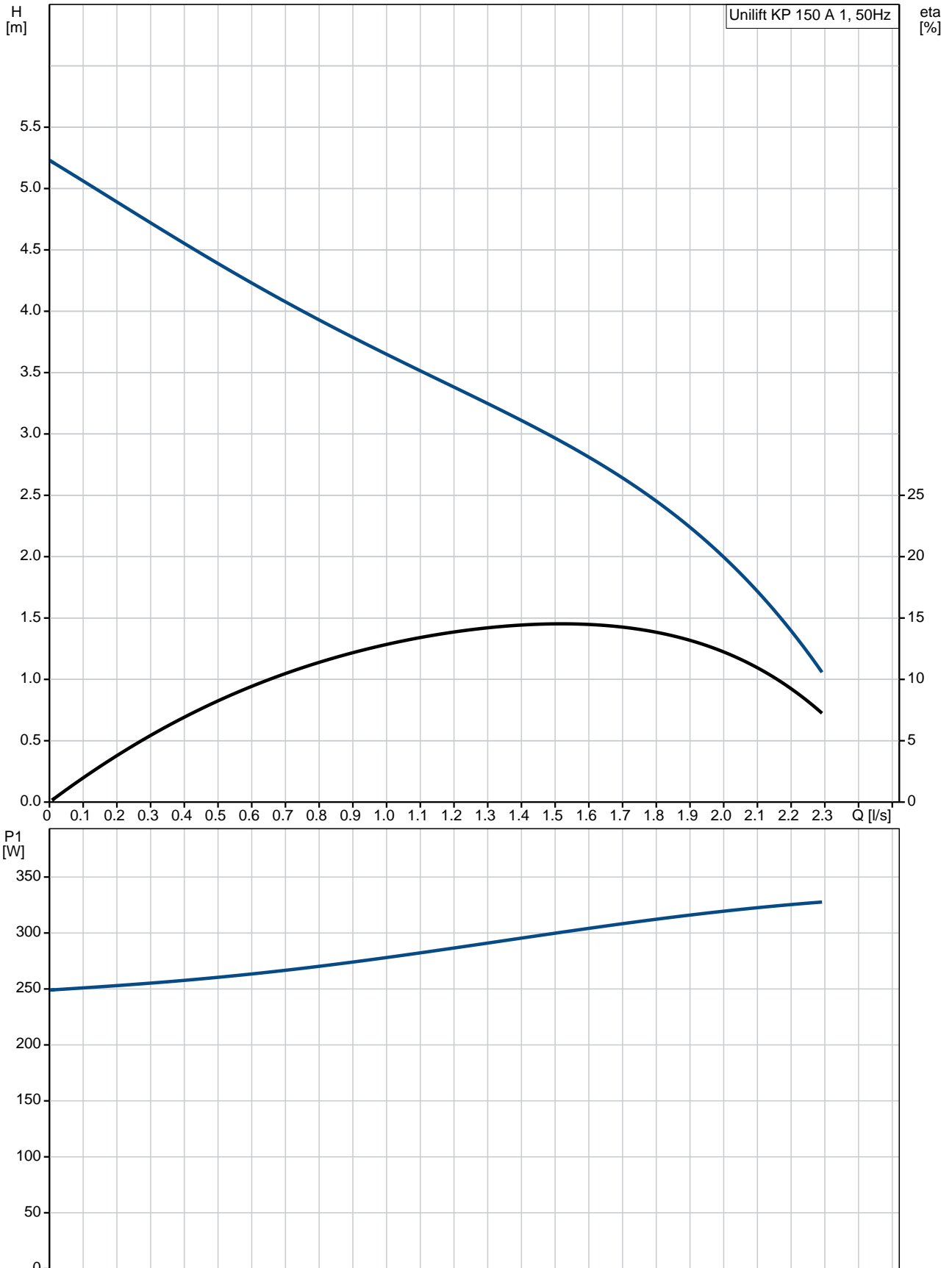
Phone:

Date:

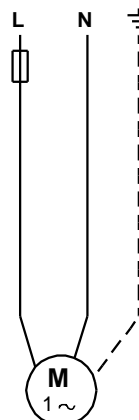
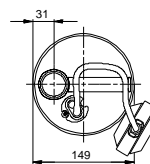
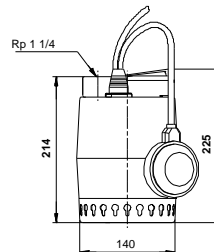
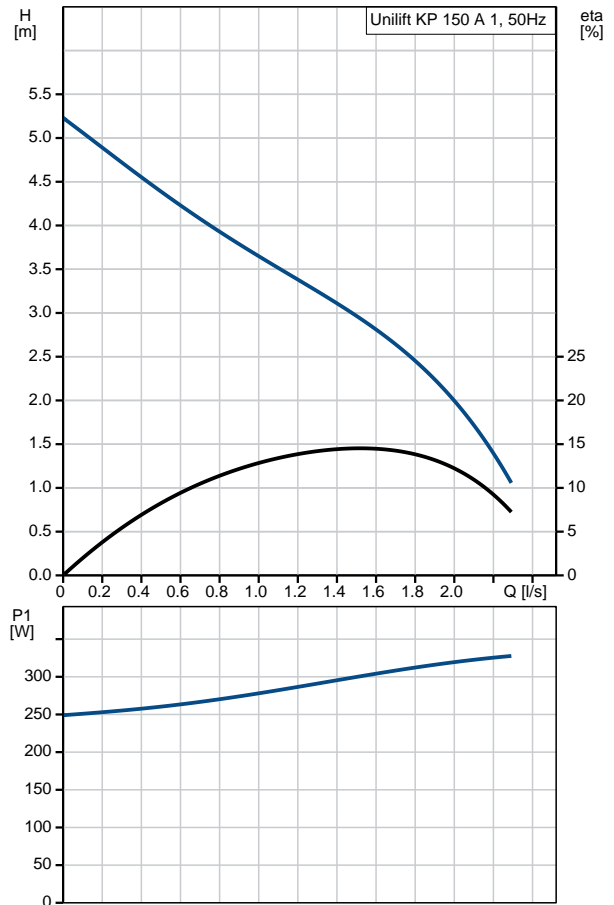
19/07/2018

Position	Qty.	Description
		<p>Installation:</p> <p>Pump outlet: Rp 1 1/4 Maximum installation depth: 7 m</p> <p>Electrical data:</p> <p>Power input - P1: 300 W Mains frequency: 50 Hz Rated voltage: 1 x 220-230 V Rated current: 1.3 A Capacitor size - run: 8 µF/400 V Enclosure class (IEC 34-5): IP68 Insulation class (IEC 85): F Length of cable: 10 m Type of cable plug: SCHUKO</p> <p>Others:</p> <p>Net weight: 6.5 kg Gross weight: 6.7 kg Shipping volume: 0.013 m³ Country of origin: HU Custom tariff no.: 84137021</p>

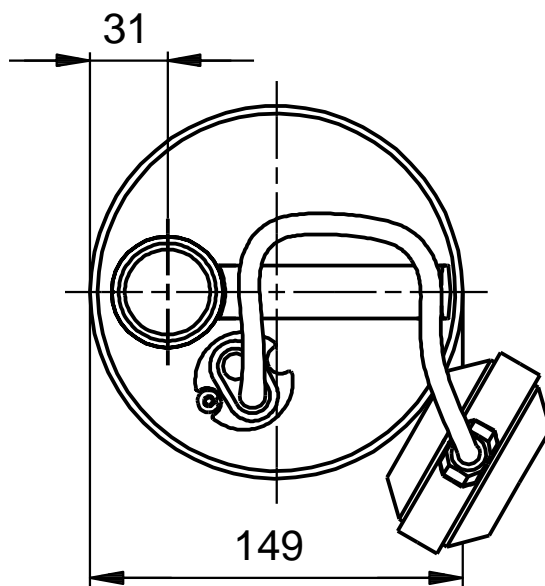
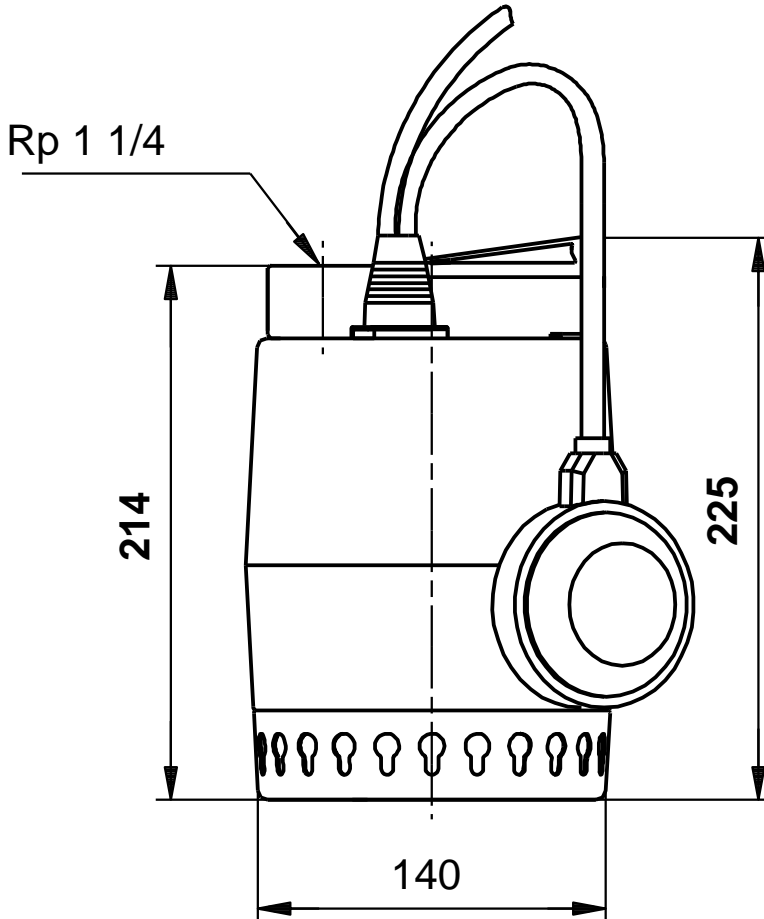
011H1800 Unilift KP 150 A 1 50 Hz



Description	Value
General information:	
Product name:	Unilift KP 150 A 1
Product No:	011H1800
EAN number:	5700391115523
Technical:	
Max flow:	2.36 l/s
Head max:	5.5 m
Maximum particle size:	10 mm
Model:	A
Materials:	
Pump housing:	Stainless steel DIN W.-Nr. 1.4301 AISI 304
Impeller:	Stainless steel DIN W.-Nr. 1.4031 AISI 304
Installation:	
Pump outlet:	Rp 1 1/4
Maximum installation depth:	7 m
Liquid:	
Pumped liquid:	Any Newtonian liquid
Liquid temperature range:	0 .. 50 °C
Density:	998.2 kg/m ³
Electrical data:	
Power input - P1:	300 W
Mains frequency:	50 Hz
Rated voltage:	1 x 220-230 V
Rated current:	1.3 A
Capacitor size - run:	8 µF/400 V
Enclosure class (IEC 34-5):	IP68
Insulation class (IEC 85):	F
Motor protec:	CONTACT
Thermal protec:	internal
Length of cable:	10 m
Type of cable plug:	SCHUKO
Controls:	
Level switch:	float switch
Others:	
Net weight:	6.5 kg
Gross weight:	6.7 kg
Shipping volume:	0.013 m ³
Country of origin:	HU
Custom tariff no.:	84137021



011H1800 Unilift KP 150 A 1 50 Hz



Note! All units are in [mm] unless others are stated.
Disclaimer: This simplified dimensional drawing does not show all details.

011H1800 Unilift KP 150 A 1 50 Hz



Note! All units are in [mm] unless others are stated.